

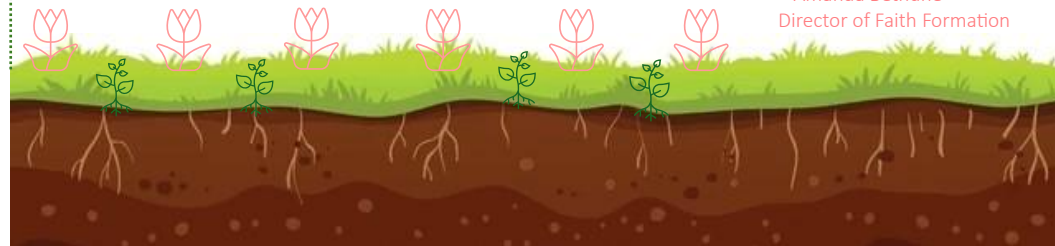
Youth Sunday

Bloom Where You're Planted

This Sunday, we celebrate our youth and recognize the many Sunday School teachers and volunteers whose dedication, encouragement, and faithful service have supported our children throughout the year. We are grateful for their commitment to nurturing faith, building community, and helping our children grow in God's love.



~ Amanda Bethune
Director of Faith Formation



Spread Your News

SUNDAY NOTES & HAPPENINGS

We welcome your notes and happenings.

📅 Submission deadline: Tuesdays

🕒 12 p.m.

📧 Kat: office.manager@whfirstchurch.org

WEBSITE & FAMILY NEWS REQUESTS

Including updates, printed materials and social media

📧 Amy: Communications@whfirstchurch.org

📧 Joy: Communications2@whfirstchurch.org

Four Ways to Give

1. Sunday morning offertory
2. Give Online: <https://pushpay.com/g/whfirstchurch>
3. Give Gifts of Securities: Contact Financial Advisor
4. Give by Mail: Checks should include designation in the memo

Sue Banville | 860-521-2119

Mail to: First Church West Hartford
12 South Main Street
West Hartford, CT 06107

CHURCH OFFICE HOURS

Monday- Friday | 9:30 a.m. – 4:30 p.m. | 860-233-9605

Office.Manager@whfirstchurch.org | <https://whfirstchurch.org/>

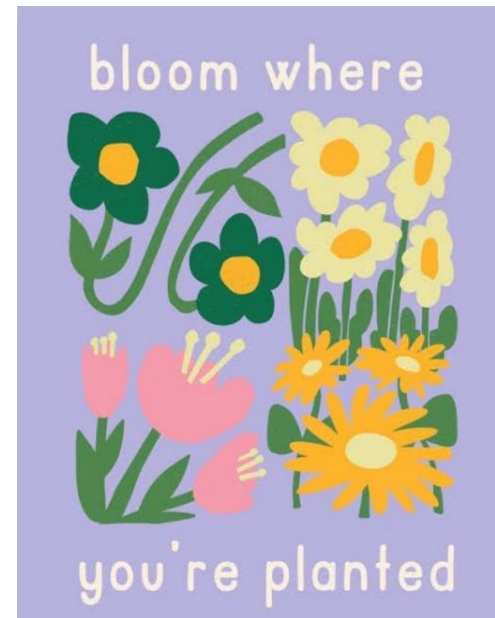


June 14,
2026

Sunday Notes

First Church Happenings

Issue
#24



Hello loved ones:

In early April 2024, when Amanda answered the call to serve as Director of Faith Formation, our hope was that the budding children's ministry would flourish under her leadership. We hoped the sunlight radiating from her spirit would infuse the established Sunday school program with energy, so that it might flower and grow. We believed in God's promised blessing.

What kind of hope is that? I would suggest that it's the kind of hope that has its sleeves rolled up, always ready to do the determined work of earning trust; and building relationships; and facing fear; and learning from missteps; and being courageously creative. Like Abram, Amanda "did not weaken in faith...no distrust made her waiver concerning the promise of God..."

It's Children's Sunday! Again! The centerpiece of the worship service will be a celebration of our amazing young people. The theme is "Bloom Where You're Planted" – good counsel that A.B. can convey from firsthand experience. Come and see!

Fondly,
rev.fredd

SAY IT WITH FLOWERS

This week's Altar Flowers are given by
Rich, Janice and Carl Hoff

*"In loving memory of
Dick and Dottie Hoff"*

Sign up here to sponsor altar flowers:

<https://bit.ly/FCAltarFlowers>

LIGHT THE STEEPLE

Father's Day is coming up! Sponsor the steeple in celebration of a dad you look up to!

<https://bit.ly/FCLightSteeple>

P-R-A-Y

Let us hold you in prayer

Submit a prayer request:

http://bit.ly/FCprayer_request

NEW MEMBER INFORMATION SESSIONS

Contact Rev. Fredd

In person,

by phone: 860-233-9605

Or E-mail: fredd.ward@whfirstchurch.org

June Reach Out: The Health Collective

Providing affirming healthcare and support services for LGBTQIA+ individuals and other marginalized communities in Greater Hartford, The Health Collective ensures no one is turned away due to inability to pay.

Please write "Health Collective" on your giving envelope

Learn more: <https://bit.ly/SupportHealthCollective> Give: <https://pushpay.com/g/whfirstchurch>

What's Happening?

A GUIDED TOUR OF EARLY CHRISTIANITY

Join us for the last meeting of the season while we continue to explore *Jesus Before the Gospels*, All welcome!

📅 Wednesday June 17

🕒 6:45 p.m.

📍 Youth room

🔗 <https://bit.ly/EarlyChristianBook>

EXPLORING SCRIPTURE BIBLE STUDY

📅 Every 1st and 3rd Sunday of the month; next meeting June 21

🕒 9 a.m.

📍 JPW Library

🔗 Joe Tobin: jmtobin@gmail.com | P: 860-916-1923

COFFEE & CONVERSATION

Join us for coffee, conversation, and community.

📅 Wednesdays

🕒 10 a.m.

📍 Hartford Baking Co. WeHa Center

FITMIX FITNESS W/ KATHI BORATKO

📅 Tuesdays; Last day of program: June 30

🕒 5:45 – 6:45 p.m.

📍 Auditorium

🔗 <https://bit.ly/FitMixKathy>

TAI CHI & QI GONG W/ CYNTHIA HOAG

📅 Thursdays; Last day of program: June 25

🕒 10:30 – 11:30 a.m.

📍 First Church Chapel

🔗 <https://bit.ly/TC-QGCynthia>

OXEN HILL FARM SUMMER CSA

Reservations for summer CSA subscriptions are now open. Choose your customizable share size and schedule your pickup to enjoy a wide variety of organic produce for the summer season!

📅 Thursdays; Starting June 25 through October 22

🕒 3 - 6:30 p.m.

📍 Rotunda entrance

🔗 <https://oxenhillfarm.com/>



RENEW & RETURN

A kind reminder to renew or return materials to JPWL - or tell us if you've lost an item so we can replace it.

USED BOOK SALE!

Fill a JPWL tote bag for \$5. Items for sale include books previously discussed by our book groups and recent donations or library discards.

📅 June 14- 28

🕒 During library hours

📍 JPWL

A TIME TO SOW: "Seed for yourself"

WeHa Grows has moved to the Rotunda entrance—stop by and pick up seeds for your fall harvest! It is still a wonderful time to start vegetables and herbs indoors. Don't forget to save and share seeds at harvest.

POST-PONED: LUNCH & LEARN: BOOK TALK – A QUARTER-ACRE OF HEARTACHE

This discussion led by Chief Big Eagle has been postponed until October 2026.

"OF PLANTS AND LAND FORMATIONS (An Ode to Maine)" BY LINDA ISHAM

The exhibit includes original works in various mediums: journals, sketch books, and unframed pieces that reflect Isham's artistic process inspired by 46 years of summering in Maine.

📅 Through June 30

🕒 During library hours

📍 JPWL Gallery

Summer Concerts

WHAT TO BRING:

Friends & Family,
Chairs & Blankets
Refreshments & Snacks.

CARILLON CONCERTS

Ft. carillonneurs from across CT and beyond!

📅 Thursdays in July

🕒 5:30- 6:30 p.m.

📍 First Church front lawn

🔗 <https://whfirstchurch.org/music/concerts/carillon-concerts/>

SUN IS SHINING CONCERT SERIES

📅 Tuesdays in August

🕒 5:30- 7:30 p.m.

📍 First Church front lawn

🔗 <https://whfirstchurch.org/music/concerts/sun-is-shining/>

DANIEL SALAZAR & FRIENDS

Inreach invites you to enjoy an evening of music and fellowship.
More details to come!

📅 Wednesday July 22

🕒 5:30 p.m. - 8:p.m.

📍 Elizabeth Park

You're Invited to get Involved!

LEVO SUMMER MEET UP

Serve alongside an organization FC has partnered with over the past year. The goal is to gather as many as possible for hands-on service and community connection!

📅 July 11

🕒 9 a.m. - 12p.m.

📍 TBD

WEST HARTFORD *Pride*

First Church is sponsoring a booth at the WeHa Pride

Festival! Booth Volunteers are needed for 1–2-hour shifts.

📅 Saturday June 27

🕒 12 – 5 p.m.

🔗 Glen: glen.macleod@uconn.edu

🔗 Jennifer: jpwebsterdir@whfirstchurch.org

🔗 Molly: jpwebsterlib@whfirstchurch.org

FERN STREET BACKPACKS: NOURISH TO FLOURISH, ONE BAG AT A TIME

Volunteer Shifts available for the FSB Program. Check out the link below and sign up for a time slot!

🔗 <https://bit.ly/FernStreetBackpacks2026>

FILL OUR FOOD BUCKETS!

If you are able, consider adding a few extra items to your grocery trip to help support neighbors facing food insecurity.

LET'S MAKE LUNCHES!

As part of our Outreach mission, we make 80 sandwiches and fill lunch bags for our neighbors in the Asylum Hill neighborhood.

📅 June 21

🕒 During coffee hour

📍 Auditorium

VOLUNTEERING IS A WORK OF HEART

The Outreach Team needs a volunteer to deliver FC food donations to the Loaves and Fishes Ministries' soup kitchen. Loaves and Fishes is grateful for every donation toward their food services to the Asylum Hill neighborhood. The soup kitchen provides families that have low food security with pantry bags of non-perishable food, a hot mid-day meal served Monday- Friday and an evening meal. FC provides volunteers for all the soup kitchen programs.

📅 Twice per month

🕒 Between 9 – 11 a.m.

📍 Immanuel Church | 10 Woodland St., Hartford

🔗 Dottie Stone: dottie@stone-stonect.com

Sundays & Monday-Thursday | 9 a.m. – 5 p.m.

P:860-232-3893 | jpwebster@whfirstchurch.org

More Events & Updates:

🔗 <https://whfirstchurch.org/jpw-library/>

🔗 Newsletter: bit.ly/JPWLNewsletter

LOST & FOUND

📍 Room 304